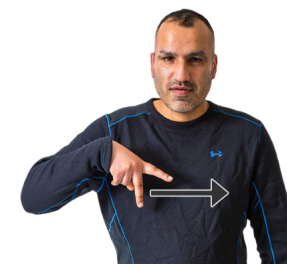
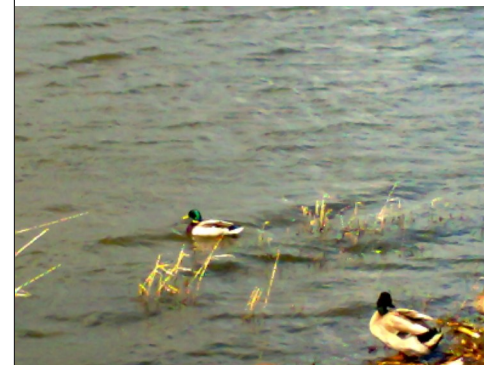


WALKING GROUPS IN NEWCASTLE

- Heaton stroller, meet every Sunday at 11am outside Stable Café
- East End Walking Group—short easy walks less than 3 miles. Contact Rosie Milne 07817765556
- Newcastle Rambling Club, Wednesdays, Saturdays and Sundays. 10-20 members. Programme on Website, meet around 11am'
- Wonderwalks—meet Mondays in Benwell. No more than 3 miles. Contact Debbie Smith on 0191 2747443
- Walk4Life- Create your own walking group
- Newcastle City Guides—Sunday at



BIG WATERS NORTHUMBERLAND WILDLIFE TRUST



Walk

BIG WATERS

GETTING THERE



You can get the number 45 bus from Stand R at Haymarket Bus Station to Dinnington. Get off at Sandy Lane Industrial Park / Brunswick Village.

SUITABLE FOR DISABLED PEOPLE



Yes, there is a flat, even footpath which is accessible for people who use wheelchair

HAZARDS AND BARRIERS

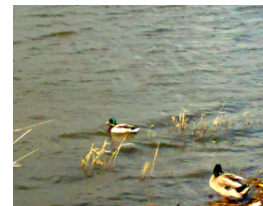


The lake has toxic blue algae in it. The water is poisonous. No swimming or paddling is allowed and pets must be kept out of the water .

The lake can be crossed by foot bridges or stepping stones.



WHAT YOU CAN SEE



There is lots of nice scenery to see. The lake has ducks and swans on it, and there are bird hides too.

FACILITIES

There are no toilets or places to buy food or drinks. There are lots of picnic tables and seats around the lake.

DIFFICULTY

The walk is quite short and easy to do.

